



U.S. Department of the Interior  
Bureau of Land Management

# News Release

BLM Colorado, Upper Colorado District, Colorado River Valley Field Office

**Media Contact:** Heather Marsh, [hmarsh@blm.gov](mailto:hmarsh@blm.gov), 970-852-9272

Aug. 26, 2025

## BLM reduces size of land closure in Garfield and Eagle Counties for Derby Fire

**GRAND JUNCTION, Colo.** — Today, the Bureau of Land Management issued a public land closure order to reopen some public lands in Garfield and Eagle Counties that were closed because of the Derby Fire. This modified order is effective immediately.

BLM issued the emergency closure Aug. 20 to ensure public and firefighter safety during fire suppression efforts and to reduce exposure to hazardous situations due to fire behavior of the Derby Fire.

This closure affects: BLM lands north and west of the town of Gypsum, Colorado, that are north of Sweetwater Road; west of the Colorado River; east of the White River National Forest boundary; and south of Derby Creek.

Please refer to the map on the following page and closure order (on the [BLM website](#)) for detailed information on the lands that are closed.

This order will remain in effect until fire managers declare the Derby Fire controlled or BLM rescinds the order. The public is to remain clear of the areas still closed. Please use caution and watch for firefighters when traveling in the area.

Violations of this emergency order may lead to prosecution, with fines and possible imprisonment.

We appreciate your understanding as we prioritize safety and resource integrity during this critical time. For more information about the land closure, please call the Colorado River Valley Field Office front desk at 970-876-9000. For more information about the Derby Fire, please call the fire information line at 970-355-3283.

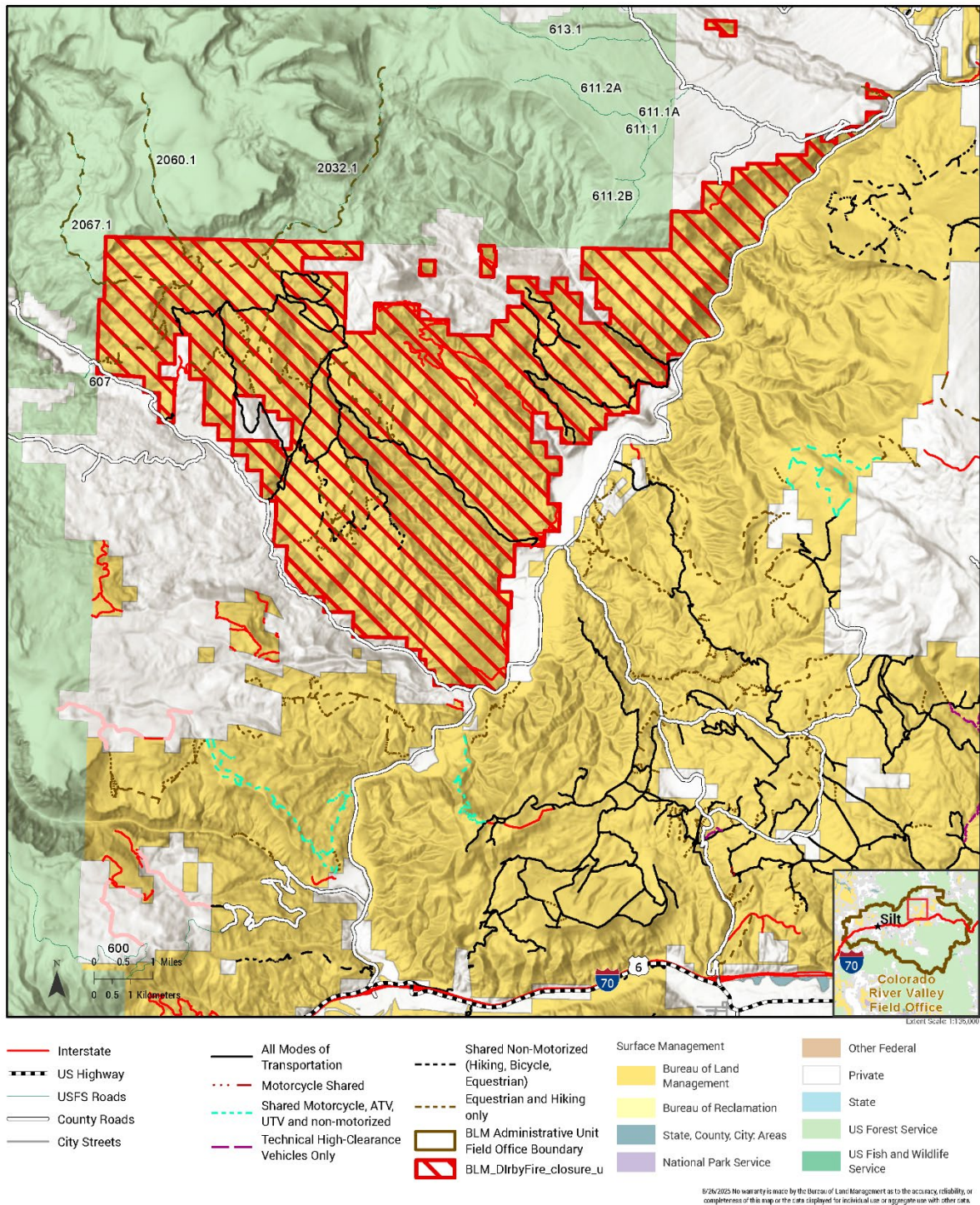


# Derby Fire BLM Area Closure

Updated August 26, 2025

Bureau of Land Management  
Colorado River Valley Field Office  
2300 River Frontage Road  
Silt, Colorado 81652  
(970) 876-9000





-BLM-

*The BLM manages more than 245 million acres of public land located primarily in 12 western states, including Alaska, on behalf of the American people. The BLM also administers 700 million acres of sub-surface mineral estate throughout the nation. Our mission is to sustain the health, diversity, and productivity of America's public lands for the use and enjoyment of present and future generations.*